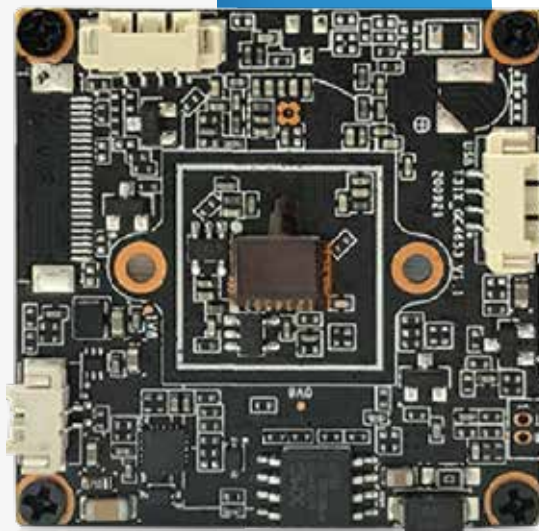


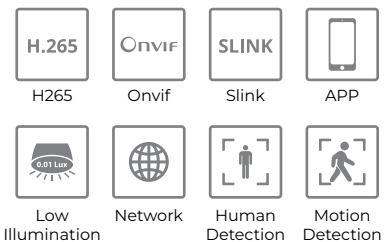
# Ingenic

## IP Module

X551



5MP H.265



Human detection IP module, resolution 5MP (2560\*2048@20fps), 4MP (2560\*1440@25fps), support two-way intercom, human alert voice broadcast, H.265 / H.264 compression format, D-WDR, 3D DNR, support 4 kinds of IR light boards: IR light, sensor trigger, warm light, dual lights, support to connect IO board including TF card (512G), alarm, RS485,Wifi, reset.

# Highlight

- Resolution 5MP (2560\*1920@20fps), 4MP (2560\*1440@25fps), 3MP (2304\*1296@25fps), 2MP (1980\*1080@25fps)
- Built-in human detection algorithm
- Detection frame 5fps, detect 5 people at the same time
- Low consumption, low code stream, low delay
- H.265 compression format, save bandwidth and storage space
- Support Smart IR to avoid Infrared over-exposure at night
- Support ICR auto switch, achieve best result for D&N video
- Support PoE (option)
- With SD/TF card slot for local storage
- Support alarm, reset, WIFI, RS485
- Support auto-electronic shuttle to suit different surveillance environment
- Support two-way audio intercom
- Support HTTPS encrypted transmission
- Support Onvif, email, NTP service
- Change the password during initial use to ensure the security of the password

# Specification

Camera	
DSP	T31X
Sensor	Color 1/2.7" Low Illumination CMOS Sensor
Lens	Support fixed lens and manual varifocal lens
D&N	ICR Switch, Auto/Color/B&W/CDS Trigger
D-WDR	D-WDR (off/low/middle/high)
IR Led Control	Auto/Manual/Off
3D DNR	Off/Low/Middle/High/Higher
Defog	Off/Low/Middle/High
Mirror	Off/ Horizontal Mirror/Vertical Mirror/180-degree flip
Image Setting	Brightness, Contrast, Sharpness, Saturation, Chroma

Human Detection	
Detection Quantity	≤5 people human
Humanoid Size	Human Pixel ≥ 40*40
Detection Ratio	≥99% (meet above requirement)
Capture Corresponding Speed	≤1s
Max Detection Frame	5fps/s
Fault Detection Ratio	≤2%
Detection Part	People with any posture including half body, head, hand, shoulder
Track People	Support
Detection Mode	Support static and dynamic human detection
Detection method	Image detection during day time or night time with lights or IR LEDs
Detection Area	Appointed area, default full-screen
Upload Method	Upload it under private protocol
Trigger Method	Video trigger

## Audio & Video Encoding

Video Encode Standard	H.265/H.264
Encoding Feature	Main stream: 5MP (2560*1920@20fps), 4MP (2560*1440@25fps), 3MP (2048*1536@25fps), 2MP (1920*1080@25fps), Sub-stream: D1 (720*576), VGA (640*360)
Max resolution	5MP (2560*1920)
Video Code Rate	Fixed code rate, variable code rate (Main stream: 160Kbps-4000kbps)
Video Type	Composited stream/video stream
Audio Standard	G.711u / 64Kbps

## Port

Network Port	Rj45 10M/100M network self-adaptation
Audio	MIC Input/ Output
Rs485	Support
Alarm	Support
Reset	Support
SD/TF card slot	Support

## Network Function

Protocol	TCP/IP, UDP, HTTP, HTTPS, DHCP, RTSP, DDNS, NTP, PPPOE, UPNP, SMTP
Connection Protocol	ONVIF, GB28181(Optional)
Security Mode	Authorized user name and password, HTTPS encryption, AES connecting encryption, RTSP verification
Motion Detection	Set detection area, can set multi-level sensitivity
Shield Alarm	Support 1 area
Privacy Mask	Support 4 areas
Schedule Linkage	Snapshot, email
Device abnormal Inspection	Support network broken alarm, IP conflict alarm, illegal visiting alarm
Character Overlay (OSD)	Title, time and date overlay, multi-line, and color of characters optional

## General

Power Supply	DC12V /PoE (option)
Size	38*38mm
Working Temperature	-10°C ~ 50°C
Working Humidity	0%~90%

# Interface Definition

